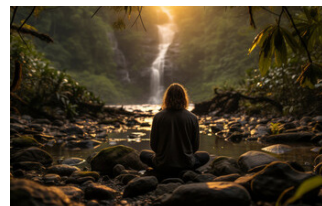
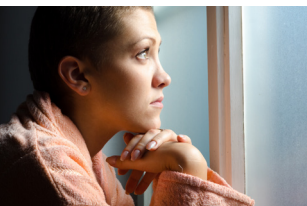




## BOZEMAN HEALTH PSYCHIATRIC SERVICES

Strengthening our local continuum of care



“By continuing collaborative efforts with community partners, we’re able to work together to build a more resilient continuum of care so those in need can live meaningful lives while being supported in their home community. We thank you for your partnership, contributions and dedication to expanding and enhancing psychiatric services for our region.”

- Chris Spoja, DO, Bozeman Health Chief Medical Officer

## MENTAL HEALTH

Montana has one of the highest rates of mental illness and suicide in the nation, according to the U.S. Department of Health and Human Services.

Yet, like many other communities in Montana, the nearest inpatient mental health care center is 130 miles from Bozeman and the only option for involuntary care is 110 miles away at the Montana State Hospital.

Bozeman Health serves a primary service area spanning 2,600 square miles and, like other rural communities, experiences several risk factors for mental health disparity including geographical isolation, lack of access to health care providers, high rates of risky behavior (binge drinking, driving under the influence and other substance use and abuse) and high rates of poverty and unemployment.

Mental health has been identified as a priority health care need for more than a decade in Bozeman Health's Community Health Needs Assessment, a survey the health system conducts regionally every three years.

## INVESTING IN MENTAL HEALTH, THEN & NOW

In 2017 Bozeman Health hired its first psychiatrist aimed at helping to expand and supplement mental health services within the community. Bozeman Health joined efforts with community initiatives and helped to lead the Gallatin Behavioral Health Coalition. By collaborating with community partners, we are building a stronger behavioral health continuum of care.

*With the community's support*, the Bozeman Health team has been steadily building programs and providing increased access to psychiatric services.

- In 2020, the system established an outpatient psychiatric clinic, outpatient psychiatric health services in Big Sky, and integrated behavioral health care services within the Women's Specialists Clinic to address substance use and postpartum mental health.
- In 2022, Psychiatric Emergency Services (PES) was constructed to support the increasing volumes of mental health patients presenting at the emergency department for care. It's located adjacent to the emergency department at Deaconess Regional Medical Center.
- Bozeman Health has recruited a dynamic multidisciplinary team of more than 30 mental health care professionals including psychiatrists, crisis intervention specialists, peer support specialists, psychiatric patient care technicians, registered nurses, an occupational therapist and a psychiatric nurse practitioner.
- Bozeman Health is investing in the development of an adult psychiatric inpatient unit, an overall project cost of \$12 million. Construction completion is targeted for 2025. The unit will consist of 14 inpatient beds and activity and therapeutic spaces. An estimated 500 patients will be cared for annually.



**"Bozeman Health is committed to supporting a robust and sustainable**

**behavioral health continuum of care for southwest Montana. These efforts are promising—and are only the beginning."**

**— Nicole Madden,  
Bozeman Health  
Psychiatric Services Director**



**Psychiatric Emergency  
Services Unit**

## PSYCHIATRIC SERVICES, CLOSE TO HOME

The adult psychiatric inpatient unit will reduce the number of patients to be transferred to other areas of the state or out-of-state to receive the care they need. Providing enhanced, evidence-based therapeutic and educational programming improves patient outcomes and integration into community-based care.

**The project investment is \$12 million, with a targeted completion date in 2025.**

---

### Adult Inpatient Psychiatric Unit

Located in the Madison Wing at Deaconess Regional Medical Center, the adult inpatient floor will be the first of its kind in the region and is designed to support safe, compassionate and enriching therapeutic services and crisis stabilization. An estimated 500 patients will be supported annually.

#### The adult inpatient unit will include:

- 14 patient beds via 8 patient rooms (6 double rooms, 2 single rooms)
- Areas for group therapy and therapeutic activities
- Patient exam and family consultation areas
- Conference room for treatment and care planning
- A specialized area for emergency detention placement



#### Care provided to patients will include:

- Integrated care model
- Specialized case management services
- Individual and group therapy services
- Medication management
- Nursing support
- Occupational therapy
- Educational, enrichment and vocational support opportunities



---

## TOGETHER WE CAN TRANSFORM MENTAL HEALTH IN OUR COMMUNITY

With your help, we can address the critical need for expanded psychiatric services across southwest Montana.



"The Bozeman Health inpatient unit will fill a vital gap in the behavioral health service continuum currently available to adults in our region. Having a hospital based inpatient program in southwest Montana will allow people to receive needed care without having to leave their community or the state and it will allow all of our community agencies to better support the mental health needs of people locally. The Gallatin Behavioral Health Coalition is united in its support of this essential project."

— Kirsten Smith, Coordinator, Gallatin Behavioral Health Coalition



"Collaboration, partnership and community support will ensure that our community can access the specialized care and psychiatric support they need to the highest clinical expectations. Working together with community partners, our regional care continuum is being rebuilt, with compassion, leading to improved health outcomes for residents and visitors alike and building a strong foundation upon which new services can further support our friends, family,

and neighbors. We recognize that no single organization can support the entire continuum of services our community needs."

— Anne Thomas, MD  
Bozeman Health, Psychiatrist



## INVESTING IN OUR REGION'S BEHAVIORAL HEALTH CONTINUUM

Charitable support from individuals, corporations and foundations is essential to implement and sustain programs that are intended to have both immediate and long-term positive impact and health outcomes.

For more information about how you can support increased psychiatric care, close to home, contact Bozeman Health Foundation at 406-414-1085 or [foundation@bozemanhealth.org](mailto:foundation@bozemanhealth.org).



[BozemanHealthFoundation.org](https://BozemanHealthFoundation.org)

875 S. Cottonwood Rd., STE 350, Bozeman, MT 59718 | 406.414.1085



# YOU CAN HELP BUILD COMMUNITY WELL-BEING

## Healing hearts, restoring hope: Support mental health in our region

Contributions will help support the continued expansion of psychiatric services and patient care across the entire health system and help offset a portion of construction and equipment costs for the 14-bed adult inpatient unit. Gifts of support will help provide critical start-up funding for early operational costs, specialized personnel and program expansion requirements, technology, equipment, furnishings, occupational therapy and enrichment supplies, curriculum development and education.

Contributions will ensure the continued development, enhancement and expansion of psychiatric services in our clinics, outpatient psychiatry, specialty area, crisis stabilization in the Psychiatric Emergency Services (PES) area and inpatient psychiatry and hospitalization.

We recognize these are new clinical areas for the health system. With the community's help we can ensure the highest clinical outcomes and sustainability as we provide care in these areas and strengthen the broader behavioral health continuum of care in southwest Montana.

**Mental health matters. Join us in providing hope and healing.**

**Gifts of all sizes will make a positive and lasting impact. There are many opportunities to sponsor an area of the inpatient unit available on a first-come, first-served basis.**

### Patient spaces available for sponsorship include:

- Large group activity/dining room (2) \$200,000
- Group therapy room (1) \$125,000
- Patient and family consult room (1) \$100,000
- Conference room/treatment planning room (1) \$ 75,000
- Patient quiet activity room (1) \$ 50,000
- Inpatient Psychiatric Patient Rooms (8) \$ 25,000
- Patient quiet room (1) \$ 20,000
- Patient exam and consult room (1) \$ 20,000
- Occupational therapy program activity carts (4) \$ 15,000

*A special recognition wall display at Deaconess Regional Medical Center near the entrance to the locked inpatient unit will thank and honor the generous donors who have helped make this project a reality.*

*Sponsored spaces will be recognized with wording designated by the donor or donor's representatives on a featured area of the recognition wall.*

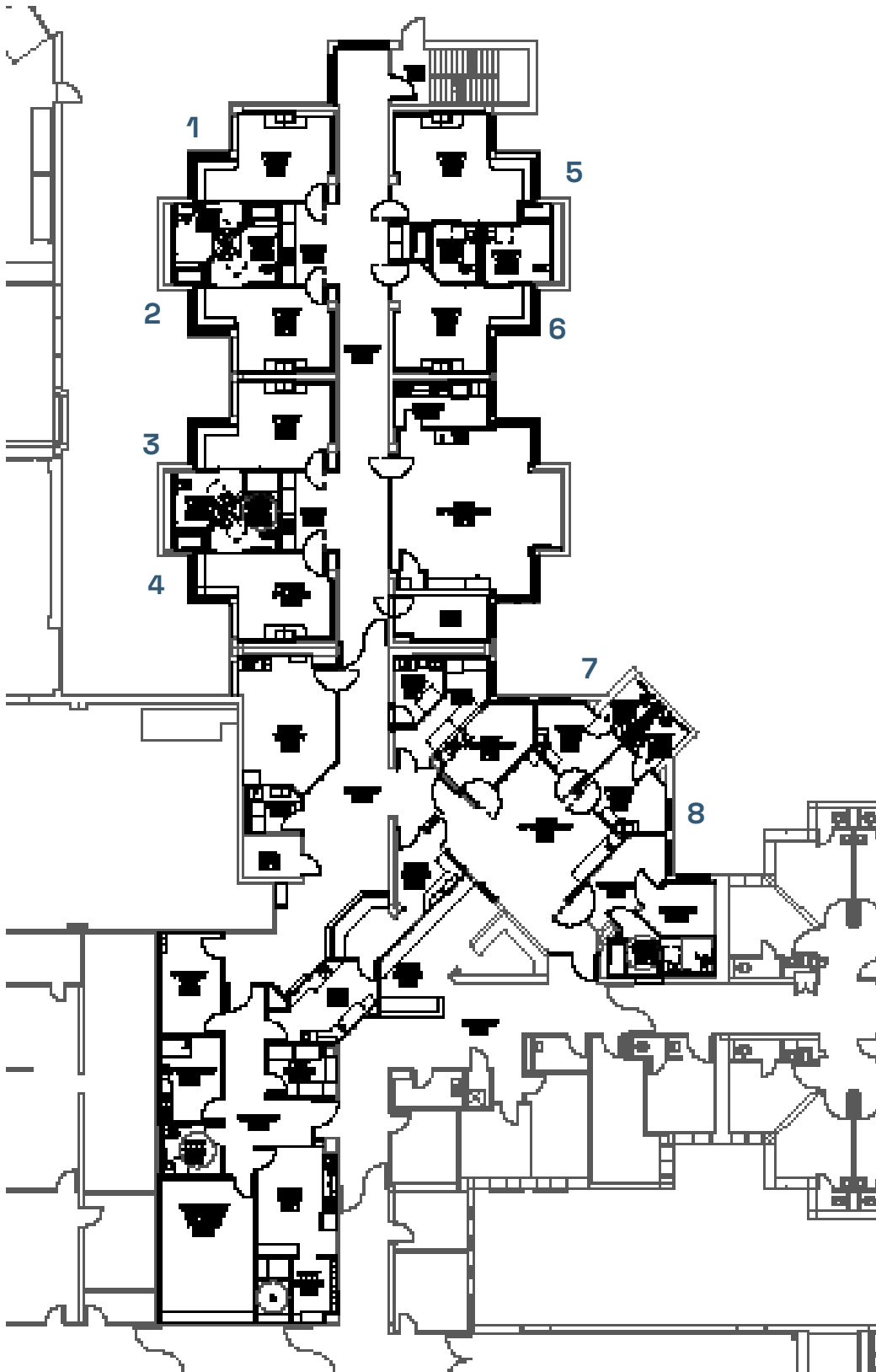
“Your gift can help realize this vision to deepen and enhance psychiatric services for our community's growing needs.

— Andrew Sullivan, MD, Bozeman Health Foundation Board Member



## Adult Psychiatric Inpatient Floor Plan

Each patient room will include a photography mural and naming theme reflecting our familiar Montana landscapes. Donors can sponsor rooms and patient spaces helping to provide this peaceful, therapeutically-designed setting.



### Photography Murals and Room Names

